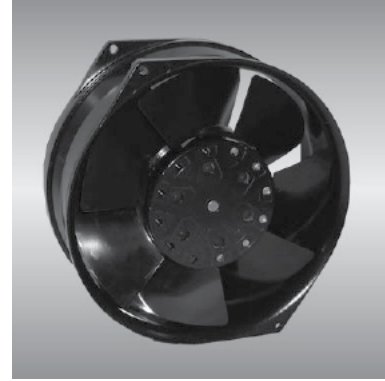


∅150 IG series

x55mm



High Temperature fan is available!

110V -40°C to 90°C

230V -40°C to 85°C

General Specifications

- Motor : Shaded pole AC motor
- Frame & Impeller : Metal
- Storage temperature : -40°C to +75°C
- Operating temperature : -10°C to +70°C

Major Characteristic Parameters

Model	Bearing System	Rated Voltage	Freq.	Power Input	Rated Speed	Maximum Air Flow	Maximum Static Pressure	Sound Level	Weight		
Part NO.	B / S	V	Hz	W	RPM	m ³ /min	CFM	mm-H ₂ O	In-H ₂ O	dBA	Kg
I GE15055B1H	B	110	50/60	46/44	2700/3000	5.38/6.65	190/235	16.0/17.8	0.63/0.70	49/53	1.10
I GE15055B2H	B	230	50/60	46/44	2700/3000	5.38/6.65	190/235	16.0/17.8	0.63/0.70	49/53	1.10

*Bearing system B: Two Ball Bearing F: Fluid Bearing S: Sleeve Bearing

